



Lea Road, Waltham Abbey, EN9

BUTLER & STAG



**Guide Price £275.000 -  
£300.000**

**Positioned in the highly  
sought after development,  
this stunning one bedroom  
apartment is located a  
short walk from Waltham  
Cross British Rail Station.**



## **Leasehold**

- Second Floor Apartment
- One Bedroom
- Stunning Throughout
- Balcony
- Long Lease
- Open Plan  
Kitchen/lounge Area

Arranged over one floor and spanning just over 550 sq ft, this stunning property is finished to a high standard throughout. The apartment comprises of one double bedroom, a bright open-plan living/kitchen area with double doors leading onto the fantastic east south facing private balcony and a contemporary luxury bathroom completes this stunning flat.

Externally there is one allocated parking bay in the small private carpark as well as free cycle storage to enable you to enjoy the River Lea cycle path. Adjacent to the apartment you will also find on street parking.

The property is located in the highly sought after Hazlemere Marina development and offers direct footpath access to River Lea. The luxury apartment is only approx. 8-10 minute walk to Waltham Abbey Station and close to the M25 providing excellent transport opportunities.

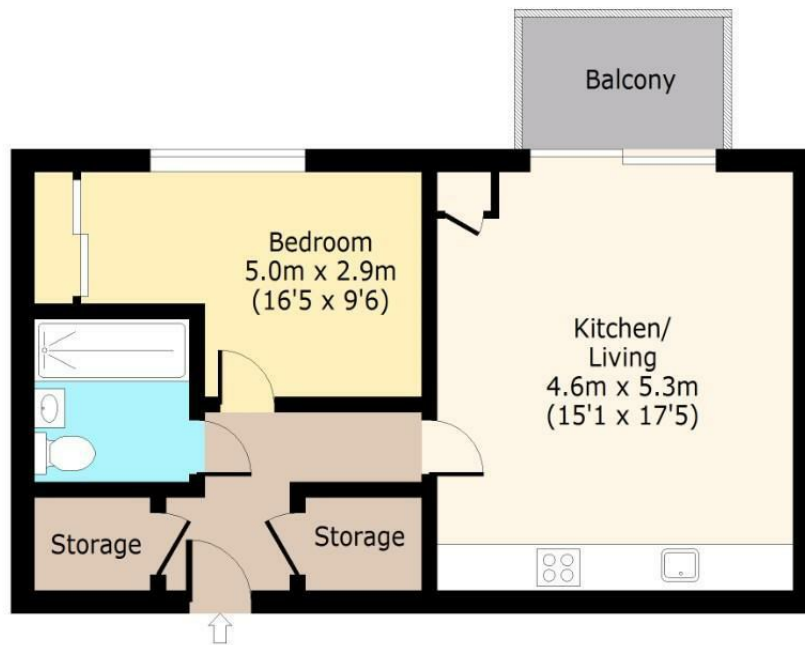




# Liberty Court,

## Second Floor

Approx. 52.95 Sq. meters (570 Sq. feet)



Total area: approx. 52.95 Sq. meters (570 Sq. feet)  
For illustration purposes only - not to scale  
[www.lpaplus.com](http://www.lpaplus.com)

IMPORTANT NOTICE - These particulars have been prepared in good faith and they are not intended to constitute part of an offer or contract. We have not performed a structural survey on this property and the services, appliances and specific fittings have not been tested. All photographs, measurements, floor plans and distances referred to are given as a guide and should not be relied upon.

# BUTLER & STAG

☎ 01992 667666

🏠 4 Forest Drive, Theydon Bois, Essex, CM16 7EY

✉ [theydon@butlerandstag.com](mailto:theydon@butlerandstag.com)

[www.butlerandstag.uk](http://www.butlerandstag.uk)